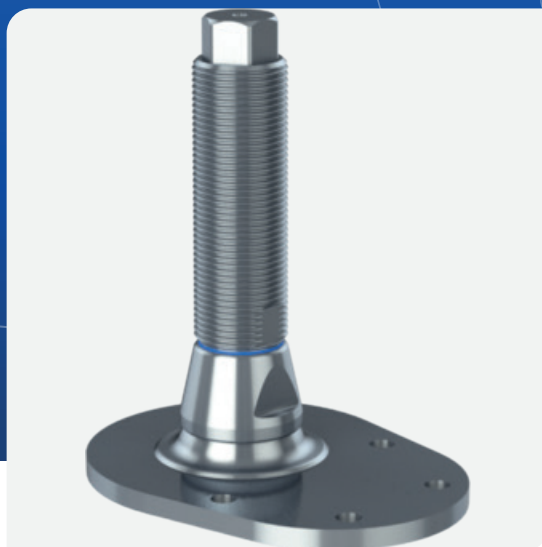


Machine foot HXJCFE- HEX300(I)-HXEH90310

000000 0000000 2000212



Type HXJEHEX + HXJCFEHEX

000000 0000000000000000 0000000000000000
 000000 HXJEHEX + HXJCFEHEX 0 00000000 0000000000
 0 00000000 0000000000000000 000000000
 — 000 00000000000000 000000 000 000000,
 00000000000000, 000000000 0 0000000000000
 0 0000000000000000 00000000 0 0000000 00
 000000000 0000000000000000 00000000000000.

- 000000000 000000000000000000 0 000000000
 000000000000 0 0000000000 0000000.

- 000000 00000 0000000000000000 0 000000000
 0000000000000000 00 000000000 000000
 0000000000

- 00000000000000 00000000000000 0000000
 00000000000 — 000000000 00000000000 00
 00000000000.

- 000000000000000 00000000, 00000000000
 0 000000000000000 0000000 000000000
 00000000000 Hilti.

- 00000000000000000 0000000000 0000000000
 000000000000000 000000000000000000.

- 00000000 0 000000000000000 0 000000000000000
 000000000000000 00000000000000 NZS 4219.

- 00000000000000 00000000000 0000000000000000
 000000000 00000000000 000000000000.

- 00000000000000 0000000 AISI 304/A2, 1.4301. 00
 000000000 — 0000000 AISI 316/A4, 1.4401.

0000000000000000 0000000000000000		
H00. 0000000000	432000 N	
00000000 0000000000	90 mm	3.54"
00000000 000000.	333 mm	13.11"
00000000 0000.	132 mm	5.20"
00000000 000000	445 mm	17.52"
000000000 00000000	90 mm	3.54"
0000000 00000000	55 mm	2.17"
0000000 00000000000 0000000	313 mm	12.32"
0000000 00000000	313 mm	12.32"
000000000000 000000000000	4 Pieces	
00000000000000 00000 000000	39000 N	
000000000000 000000 0000000	Round	
000000000000 000000. 0000000000	300 mm	11.81"
	0000	
00000000 00000000	M90x6.0	
00000000000000 00 00000000	201 mm	7.91"
0000000000 N0.	NGI 155656	
0000000000 00000000	Metric C	

??

