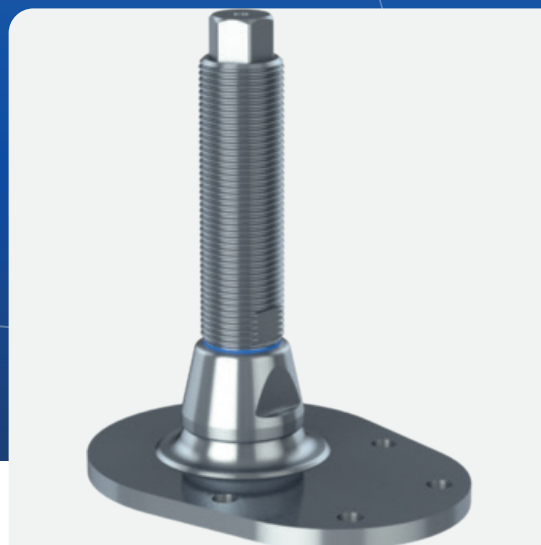


Machine foot HXJCFE- HEX300(I)-HXEH80310

ARTICLE NUMBER 2000210



Type HXJEHEX + HXJCFEHEX

The design and patent protected seismic HXJEHEX + HXJCFE-HEX levelling foot is the optimal choice for machinery, equipment, tanks and vessels located in areas subject to earthquakes.

- Simple and fast installation with height-adjustable compact design
- Can be adjusted via hex at the top of the spindle
- Movable set-up - no concrete molding required
- Total seismic stability through bolted fixation and patented locking mechanism
- Verified through Finite Element Analysis (FEA) and calculated according to New Zealand seismic standard (NZS 4219)
- Seismic anchors chosen and approved by our experienced partner Hilti
- Stainless steel AISI 304/A2, 1.4301. Optional AISI 316/A4, 1.4401

Technical specifications

Antislip	No	
Drawing no.	NGI 155953	
Footplate diameter	300 mm	11.81"
Footplate shape	Round	
Height adjustment	209 mm	8.23"
Height max.	341 mm	13.43"
Height min.	132 mm	5.20"
Height total	445 mm	17.52"
Mounting holes	4 Pieces	
Nom. Load	432000 N	
Nom. pull	39000 N	
Sleeve diameter	80 mm	3.15"
Sleeve length	55 mm	2.17"
Spindle length	313 mm	12.32"
Thread diameter	80 mm	3.15"
Thread length	313 mm	12.32"
Thread size	M80x6.00	
Thread standard	Metric C	

Technical specifications

